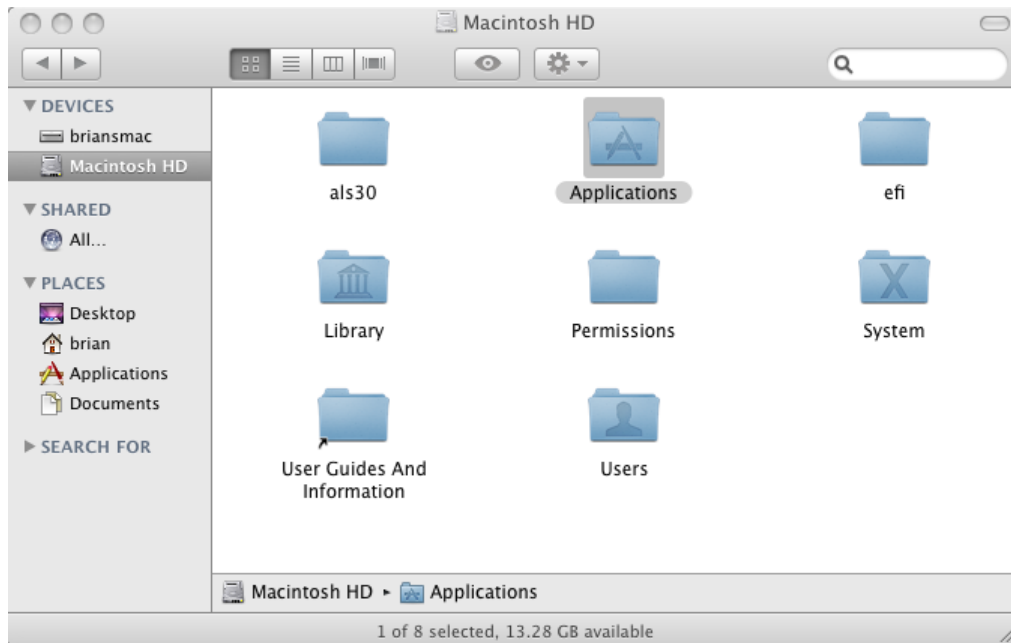


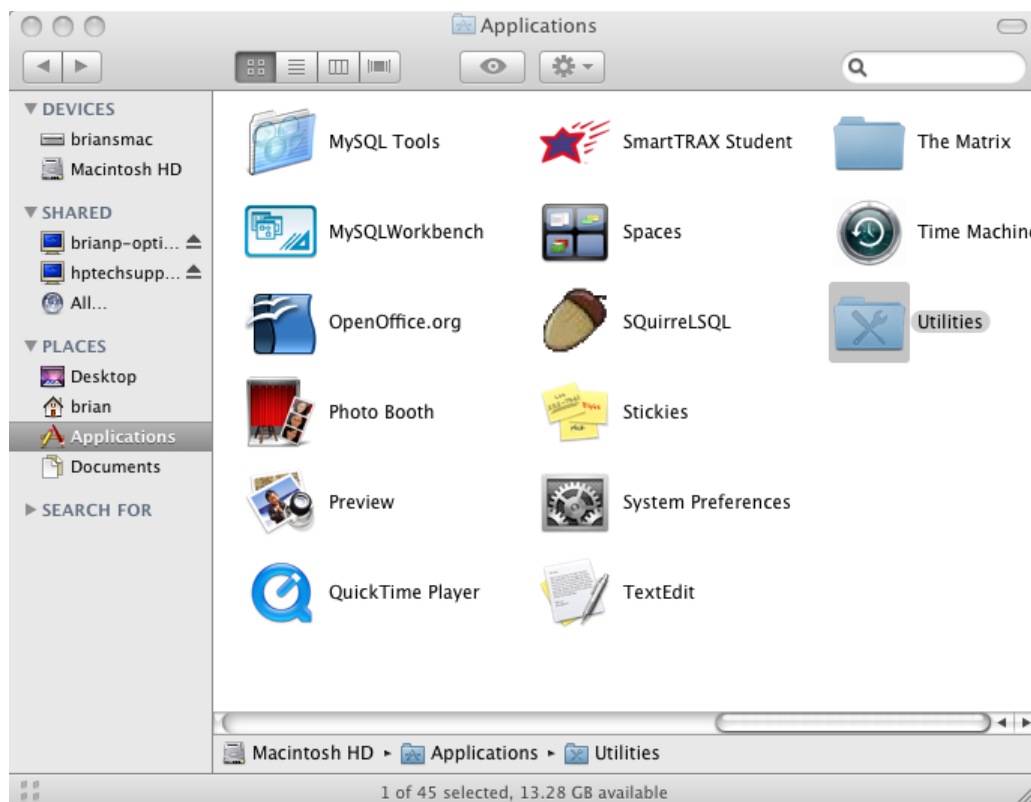
Installing the A+nywhere Learning System client on Mac OS X 10.6 (Snow Leopard)

Unlike previous versions of OS X, Snow Leopard defaults to a 64-bit version of the Java Runtime Environment. Java is used by the A+LS client program as well as its installer. While the A+LS client will function with the 64-bit version, the installer requires the 32-bit version in order to successfully install the client on Snow Leopard equipped Macs. Snow Leopard includes both the 32-bit and 64-bit flavors of Java but will, by default, use the 64-bit version. To modify this behavior and have OS X use the 32-bit version instead, do the following:

Open a Finder window and browse to the Applications folder...



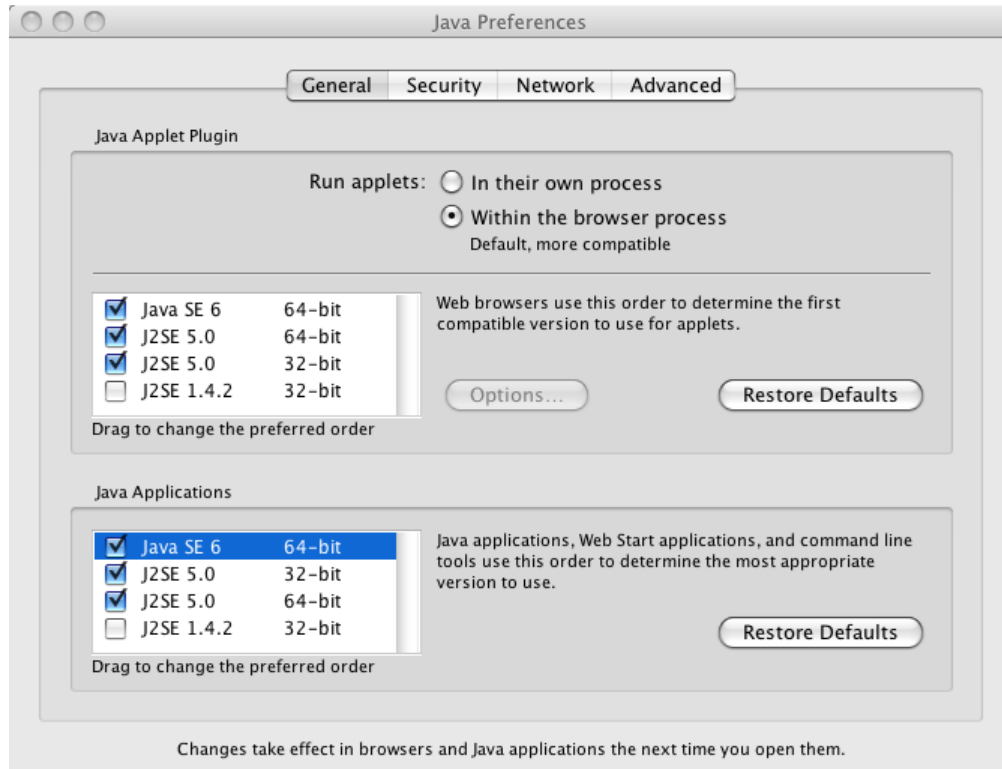
In the Applications folder, open the Utilities folder...



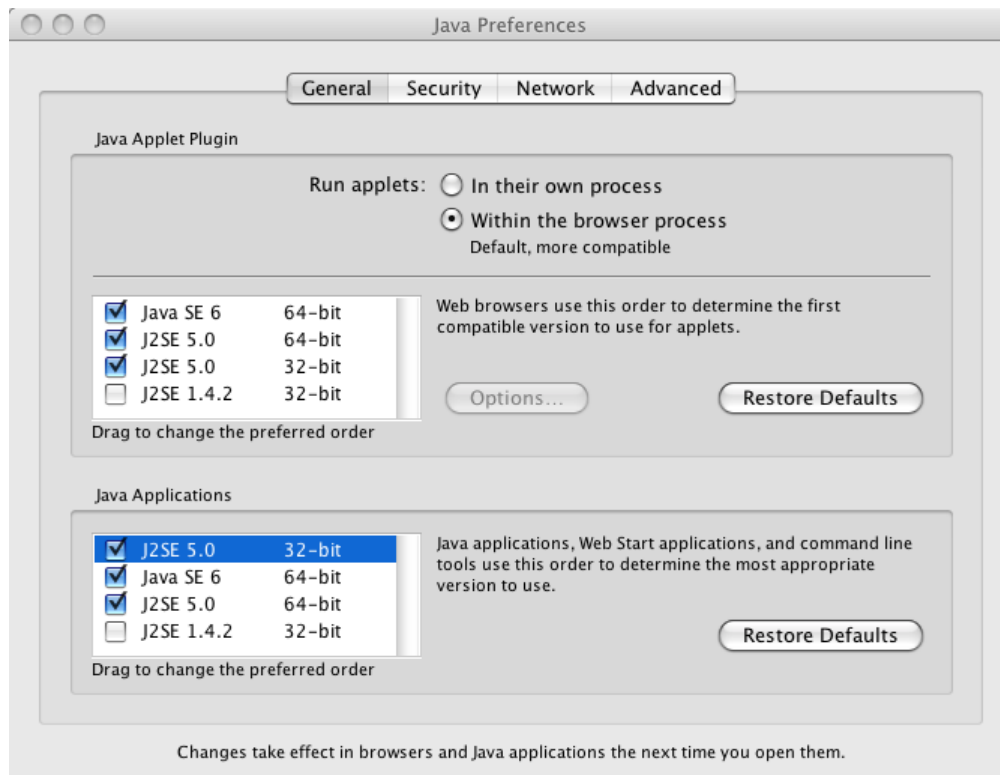
In Utilities, open the Java Preferences control panel...



In the Java Preferences control panel, you may see two or more different versions of Java, some with 32-bit and 64-bit variants. The "Java Applications" (bottom) section is what needs to be changed. From here, click and drag J2SE 5.0 (32-bit) up to the top of the list so that it appears above the 64-bit versions in the list...



After the change, the 32-bit version of J2SE 5.0 will now appear above the 64-bit version of Java SE 6...



You may now close the Java Preferences control panel and proceed with installation of the A+LS client application. If desired, the previous settings can be restored once the client has been installed.